



12 Henley Marine Drive FIVE DOCK, NSW

 5

 3

 2

12 Henley Marine Drive, Five Dock, NSW

Set on a prime, sun drenched corner opposite parklands, this stunning home offers a superb blend of period details and spacious interiors ideal for large families wanting flexibility and space. It is a walk to Haberfield and Five Dock precincts, with schools, parks and buses nearby.

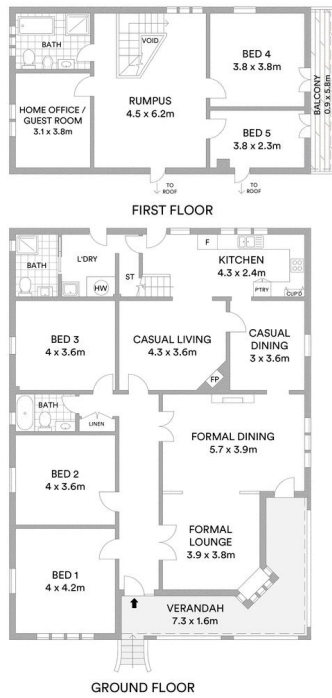
- ?Elegantly refurbished and superbly presented throughout
- ?Grand Formal lounge and dining setting offers classic style
- ?Upper level rumpus, two bedrooms and guest accommodation
- ?Timber crafted kitchen appointed with new stainless appliances
- ?Commanding street appeal enhanced by landscaped gardens
- ?Five generous bedrooms, wraparound verandah, park views
- ?Showcasing vaulted ornate ceilings and rich joinery work
- ?Polished timber floors, alfresco area, sundrenched garden lawn
- ?Superb neighbourhood accessing Timbrell Park and the Bay Run

Price: \$Sold Undisclosed



Michael Tringali

0408 000 100



McGrath

Scale in metres. Indicative only. All information contained herein is obtained from sources we believe to be accurate. We cannot guarantee its accuracy. Interested persons should make and rely on their own enquiries.