

246 Hawthorne Parade HABERFIELD, NSW



246 Hawthorne Parade, Haberfield, NSW

A rare offering on a deep 537sqm (aprox) parcel. This tightly-held brick home reveals an environment of comfort and character, with excellent potential to add further value. It enjoys a peaceful park side setting opposite Richard Murden Reserve leading to the bay.

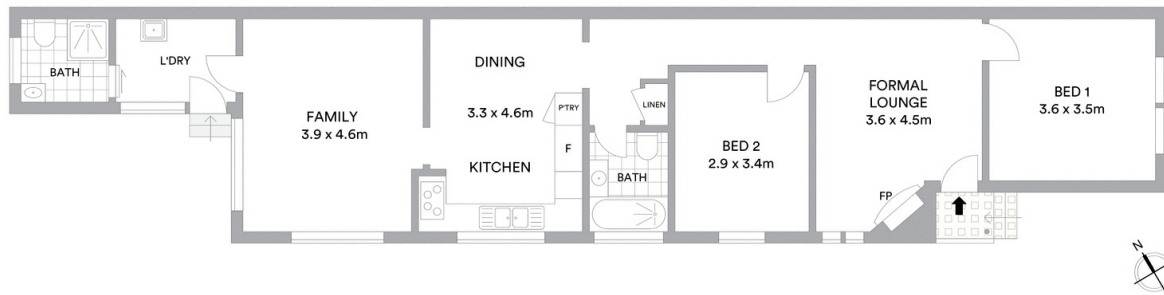
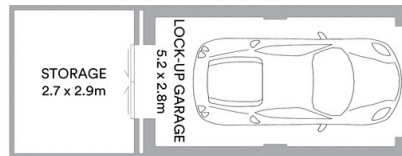
- ?Flexible single level layout incorporates dual living spaces
- ?Stylishly presented interiors showcasing generous proportions
- ?Extensive tree lined backyard provides private kids' play area
- ?Open dine-in kitchen features parquet floors, gas cooktop
- ?Two comfortable bedrooms, main captures leafy park outlook
- ?Readymade, with excellent scope to renovate or extend (STCA)
- ?Main bathroom has shower over tub, additional shower room
- ?Solid timber floors and high ceilings with feature cornices
- ?Single carport, lock-up garage and storage shed/workshop

Price: \$1,380,000



Michael Tringali

0408 000 100



McGrath

Scale in metres. Indicative only. All information contained herein is obtained from sources we believe to be accurate. We cannot guarantee its accuracy. Interested persons should make and rely on their own enquiries