



10 Wolseley Street HABERFIELD, NSW



3



1



1

## 10 WOLSELEY STREET, HABERFIELD, NSW

Showcasing an immediate sense of space and tranquility, this impeccable semi-detached period style home presents a timeless blend of original character charm and bespoke contemporary renovations. It's near both Five Dock and Haberfield shops and transport.

- Formal lounge with ornate marble fireplace flows to dining
- Additional open plan family living, bi-folds to alfresco deck
- Private and peaceful landscaped backyard with gas heated pool
- Chic gas kitchen has European appliances and stone benchtops
- Three generously proportioned bedrooms, two include built-ins
- Marble bathroom features dual basins and freestanding bathtub
- Large external laundry room, second w/c and shower facilities
- Polished timber flooring, high ceilings and bespoke joinery

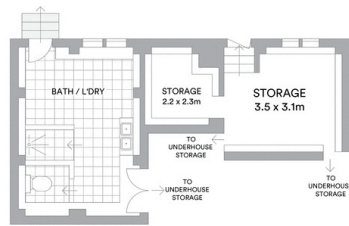
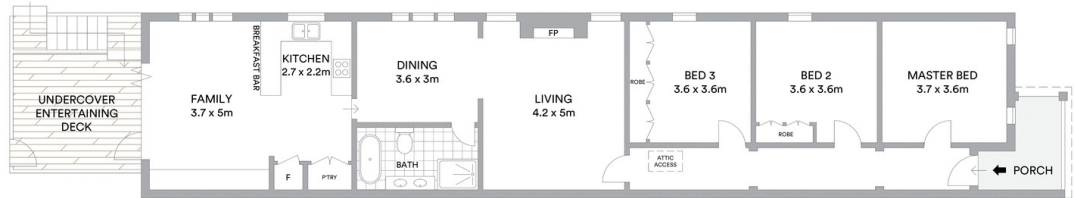
Price:

\$SOLD UNDISCLOSED

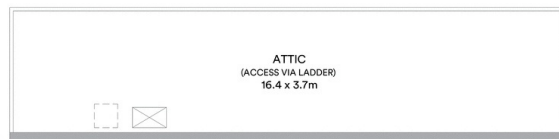


**Michael Tringali**

0408 000 100



GROUND LEVEL



LOWER GROUND LEVEL

ATTIC



**McGrath**

Scale in metres. Indicative only. All information contained herein is obtained from sources we believe to be accurate. We cannot guarantee its accuracy. Interested persons should make and rely on their own enquiries